



DEPARTMENT OF SOCIAL WORK

NEF College, Lokhra, Guwahati

MERAKI

An E-Magazine

(Issue: 25th November, 2023)

Editors:

Ms. Nabanita Dutta
Assistant Professor, Department of Social Work

Ms. Paridhi Baruah
Assistant Professor, Department of Social Work



**Message from
The DIRECTOR
NEF Group of Colleges**

To the Team Meraki,

I am thrilled to see the passion and dedication you have put into creating Meraki. A magazine like this not only enhances the creative side of the students but also reflects the progress and hard work that the entire Department has put in over the years. The hard work and creativity shine through every page .

As a Founder, I'm constantly impressed by the depth of thought and the diversity of perspectives presented in this magazine. It not only showcases the individual talents but also serves as a powerful platform to connect, inspire, and inform our fellow students, teachers and the institution.

The collaborative efforts have resulted in a publication that not only informs but also entertains and enlightens. The dedication and teamwork displayed in its creation are admirable.

Thank you for the commitment to excellence, and I'm excited to see this community go a long way.. I'm sure it will serve as a source of pride for all of us and a testament to the incredible potential of our student body and the Institution.

All the best.

Warm Regards,
Dr. Zakir Hussain
Director, NEF Group of Colleges
Lokhra, Guwahati



**Message from
The ASSISTANT DIRECTOR
NEF College**

It gives me immense pleasure to learn that the Department of Social Work, is going to publish its first digital magazine. A college magazine reflects the literary, educational and the activities going on in the college. It also projects the important events celebrated in the college during an academic session.

We at NEF believe in a joyful and experiential learning system and thereby empowering our students in a manner that they act as representatives of a meaningful and a value based society. There is two lasting legacies we hope to give our students, one is strong roots and the other is powerful wings, one is nurtured by the parents and other is offered by their teachers in the academic environment of NEF College.

Through this e-magazine I take the opportunity to appreciate and congratulate the students and faculty members of Social Work Department for successful publication of 'Meraki'. May the students be well integrated individuals who are the assets to our society. May almighty bless and guide them all in their lives.

Mrs. Farhana Ahmed
Assistant Director,
NEF College, Lokhra, Guwahati



Message from The PRINCIPAL NEF College

It gives me immense pleasure that the students and teachers of the Department of Social Work of our college intend to publish an e- magazine titled as "Meraki" . It is undoubtedly praiseworthy step on the part of the Department which definitely expose the talents of the students and teachers. I do appreciate their effort in literary publication covering the creativity of students and teachers including their academics excellency and co- curricular achievement.

By releasing "Meraki" the students and teachers would try to do something with love from the corner of soul and would throw their essence of activities into the society.

This type of creative work will make all the students and teachers accountable to the society.

I do offer my heartiest best wishes for successful publication of the e- magazine and it's wide circulation among student community at minimum cost.

Dr. Ghanshyam Nath
Principal
NEF College, Lokhra, Guwahati



**Message from
The HEAD OF THE
DEPARTMENT
(SOCIAL WORK)**

The Department of Social Work, NEF College, Guwahati has passed its 14 glorious years since its inception in the year 2009 in the arena of academic excellence. After publication of several issues of the college magazine in print editions, now it is switching over to publish e-magazine to keep pace with modern era. It is of immense pleasure that the Social Work Department is going to publish its first volume of e- magazine entitled "Meraki". Meraki, a Greek word meaning to do something with soul, creativity, or love; to put something of yourself in your work. It is the best platform to reflect ideas and thinking of present generation who are quite familiar with modern technology. Through this publication, the future Social Workers of NEF will be able to disseminate the ideas and areas of interest in social service sector to the nooks and corners of the world. Moreover, they will be able to access critical review from any part of the globe.

I extend my best wishes to the Editorial Board associated with publication of e - magazine with a hope that endeavour will continue at a regular intervals in near future.

With best wishes once again,

**Dr Alia Zebin Ahmed
HoD, Department of Social Work
NEF College, Lokhra, Guwahati.**

ACKNOWLEDGEMENT

First and foremost , we extend our profound gratitude to our respected Director , Dr. Zakir Hussain for providing us the platform to explore the opportunities and for being a continual source of inspiration.

We would like to convey our heartfelt gratitude to our beloved Assistant Director Mrs. Farhana Ahmed for the constant support towards the Department. Your useful advice and suggestions were really helpful to us to complete the e magazine.

We would also like to thank our respected Principal, Dr. Ghanshyam Nath for his guidance and support. We are really grateful for your valuable contribution towards our e magazine.

We also would like to extend our immense gratitude to Dr. Alia Zebin Ahmed, our esteemed HOD, for her invaluable guidance and unwavering support throughout the creation of this e-magazine. Your expertise, insights, and encouragement were invaluable in helping us to complete this work.

We would also like to extend our heartfelt gratitude to the entire faculty members of the Social Work Department for their support and coordination throughout the process.

Additionally, a special thanks to the students whose dedicated contributions have enriched the pages of this magazine.

Thank you all for being integral parts of this endeavor. Meraki would not have been successful without your cooperation and inputs.

CONTENT

SECTION -I

- About the College,
- About the Department

SECTION -II

- Faculty Corner

SECTION -III

- Student Corner

SECTION -IV

- Activities Conducted by the Department in the year 2023

SECTION -V

- Department Toppers

SECTION -VI

- Student's Achievements

SECTION -VII

- Photo Gallery

Section- I

- *About the College,*
- *About the Department*

ABOUT THE COLLEGE:

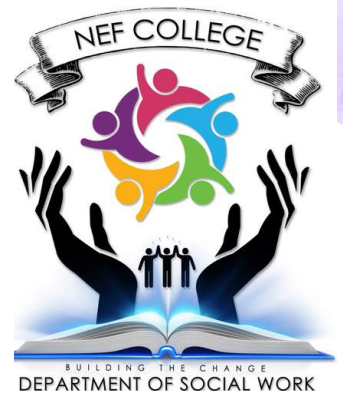


National Education Foundation College (NEF), Guwahati is a Post-Graduate College; established under the aegis of National Education Foundation (NEF) Trust, Guwahati. The NEF Trust is a charitable educational trust duly registered under Indian Trusts Act, 1882 and also u/s 12A of I.T. Act, 1961.

NEF has been rendering exemplary services in the field of higher education in a short span of time with special emphasis on job-oriented professional and traditional courses.

Since its establishment, it has been rendering its services with dedication for dissemination of education keeping pace with the changing trend in educational scenario. Along with the traditional courses NEF has provided professional courses in Management, Social Work, Law, Pharmaceutical Sciences Para-medical, Nursing and the like. pace with the changing trend in educational scenario. NEF stood as pioneer by introducing various professional job-oriented courses in the entire North East Region and was able to make the people aware of the new vistas in the educational field. In addition to the formal & non formal education the organization is engaged in academic and management researches, training etc.

ABOUT THE DEPARTMENT

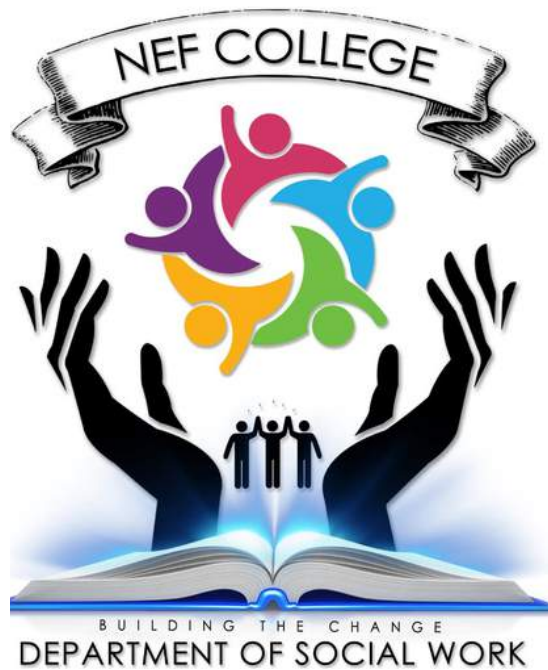


The Department of Social Work of NEF College was established in the year 2009 with the introduction of Master of Social Work (MSW) course under Dibrugarh University. The College introduced BSW course in the year 2012 with due permission of Dibrugarh University. The department dwells in the belief of creating dynamic and enthusiastic social workers that can serve the society in the best form. We, as a department believe in the creation of a strong foundation that in the long run will be able to help people to stand firm against the odds of the society. As we all dream about a society free from any waywardness and strife, we work to help people turn their dreams into reality. As the motto of social work is “to help people to help themselves”, our department tries to put pieces together to make one self sufficient.

Social work being a field based course, the Department runs its field action programme to demonstrate the relevance of social work interventions in dealing with social issues and problems and also to strengthen its theoretical foundation. We try to give the students the best exposure to the field reality in the most authentic way. In the same manner, the students are being taught to adapt to the culture of the society as a whole. Role-play being an important and inevitable aspect of social work, students are encouraged to learn and execute as per the need of the hour.



Faculty members



ABOUT THE LOGO

The logo of the Department represents a powerful message:

Book: The book symbolizes wisdom and knowledge, signifying the importance of education and learning in society.

Hand: The hand represents protection and care for humanity, emphasizing the role of knowledge and compassion in safeguarding and improving the lives of people.

Colorful Humans: The colorful humans in the logo signify diversity and unity. It suggests that people from various backgrounds, cultures, and perspectives can come together, working harmoniously for a better society. This diversity is celebrated as a source of strength and enrichment.

Overall, this logo symbolizes the idea that knowledge, compassion, and diversity are key elements in building a better and more inclusive society where people protect and support one another.

Section- II
Faculty Corner



Panchali Devi Choudhury

Assistant Professor
Department of Social Work

Evidence Based Practice in Social Work: Challenge and Opportunities

The use of research evidence to guide practice and develop policies in the human service has become increasingly important given the limited resources and the pressures to document service outcomes. These pressures have emerged from increased scrutiny of public expenditure and the call for information about the impact of interventions on the reduction or elimination of various social problems. Social work practitioners are being required to provide evidence for their practice and to engage in debates about evidence-based practice. The essential concept of EBP (evidence based practice) is to rely upon the best scientific evidence that is currently available which is different from the traditional practice model because there the social worker rarely looks for empirical evidence of treatment efficacy or presented treatment alternatives to the client. According to Person, A EBP practitioner is one who-

- Provides informed consent for treatment.
- Relies on the efficacy data.
- Uses of empirical literature in decision making.
- Uses systematic, hypothesis testing approach to the treatment of each case.

This approach begins with- careful assessment, sets clear and measurable treatment goals, and develops an individualized formulation and treatment plan based on that formulation, monitoring, modifying the goals, referral and ending where needed on the basis of best available evidence for practice.

On the basis of hierarchy, from high to low in terms of their ability to reliability, some forms of research methods are considered as evidence. They are-Meta Analysis or Systemic reviews, Randomised Controlled Trials, Quasi experimental Studies, Cohort studies and Case control, Qualitative studies, Expert opinion and practice.

The hallmark of evidence based practice is the systematic and rigorous appraisals of research related to relevant practice questions. The primary focus is on the validity of assessment measures and the effectiveness of interventions.

For eg- Cochrane Reviews are systematic reviews of primary research in human health care and health policy, and are internationally recognised as the highest standard in evidence based health care, social and behavioural sectors, criminology and education. They investigate the effects of interventions for prevention, treatment and rehabilitation. The Merits of practicing EBP lies in professional reputation and legitimacy, ethical responsibility, knowledge base for practice, critical approach to practice, social work research culture. Usually the following dimensions and variables have been used to compare conditions in research settings and practice setting which are-

- **Intervention Characteristics** (focus of treatment, model complexity, implementation specification).
- **Practitioner Characteristics** (training, clinical supervision, type of practitioner)
- **Client Feature** (age, gender, ethnicity, cultural identification, family context, referral source)
- **Service Delivery Features** (frequency, duration, source of payments)
- **Organisational Characteristics** (structure, hierarchy and procedures, culture and climate, size, mission , mandates)
- **Service System** (financing methods, legal mandates, interagency working relationships)

In Indian context, observational evidence suggests that community-based services for people with schizophrenia can be successfully provided by community health workers, when supervised by specialists, in low-income and middle-income countries. The collaborative community-based care plus facility-based care intervention is more effective than facility-based care, especially for reducing disability and symptoms of psychosis. The results show that the study intervention is best implemented as an initial service in settings where services are scarce, for example in rural areas. On the basis of these results currently in six sites across India a community mental health programme is going on for a period of five years.

Practice guidelines are required to make standards explicit and accessible, simplify clinical decision making and improve cost effectiveness, to assess professional performance, to educate practitioner and professionals about the best practice. Despite these utilities there remain some drawbacks like, practice guidelines developed at national and regional level may not reflect local needs, ownership by practitioners, or differences in demographic and clinical factors. Secondly, for most of the social work practice, there is no specific goals of the intervention such as stopping or reducing a symptom but there is a overall concern for improving 'well being' and promoting 'fairness' and 'social justice'.

Assessment of effectiveness needs to include questions about ‘whose perspective? What context?’ and ‘in relation to what?’ Within the organisational context in which social work services are provided, there may be conflicting definitions of effectiveness, particularly if there is a preoccupation with costs and efficiency. So there is a growing emphasis in social work research literature on the need for mixed-method approaches. Strategies such as agency –university partnerships, staff training that features problem-solving learning approaches, continued discussion, training intending EBP, strategies and resources debate and inquiry on the applicability and support of increased evidence-based practice to social work, modification of agency culture to support and sustain may bring evidence based practice within the human service. Regardless of how strong the evidence for a particular intervention may be, social workers are in a position where they need to critically reflect on their work in the political, social, organisational and interpersonal contexts, engage in debates, negotiate appropriate practices and, when necessary, argue convincingly for the effectiveness of the work that is done.





S. Srinivash Rao

Assistant Professor
Department of Social Work

Farmers Suicide: A Forced Prey

Over the decades, mankind has travelled a long distance on its way to progression in all fronts. Industrial Revolution has brought global changes, introduced new ways of societal development and skills for survival has continuously evolved in due course of time. Traditional practice of agriculture has been replaced by new means of farming replacing the bullocks by tractors. Agriculture has seen tremendous changes with inclusion of new techniques, advanced fertilizers and machineries in the paddy field and thanks to artificial irrigation, the dependence on climate and rain has been highly minimized. With all these changes, the scenario of farming and agriculture is completely new in every country of the world including India. The advancement in agriculture and modern farming no doubt is beneficial for people and the nation but are these advancements equally benefitting those who put their heart and soul to grow crops?

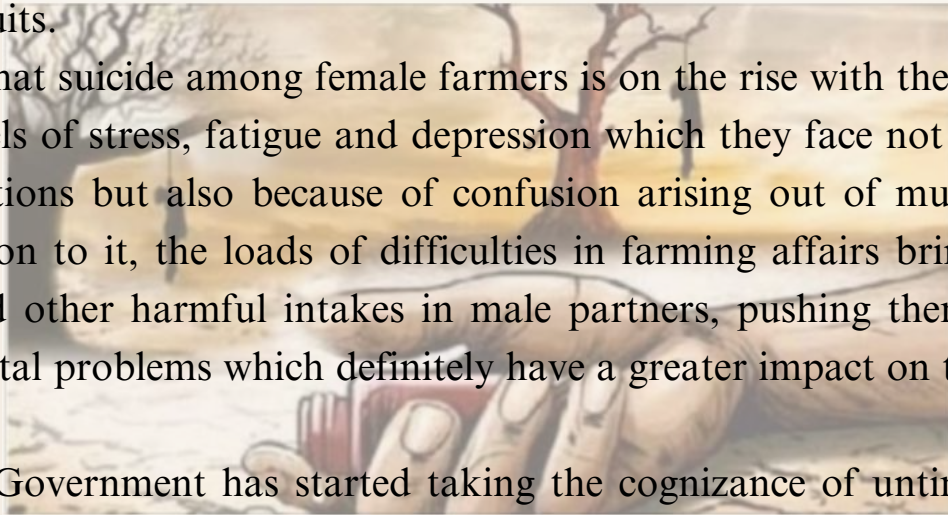
From the age old times, India has been a land of agriculture and more than half of the workforce of the nation is engaged in agriculture producing variety of crops for the people across the globe. Despite the growth of industrial sector, a large share of economy comes from agriculture. Although, the economy of the country is going steady but the records show that the farmers fall prey to dismal conditions and having left with no choice, they are forced to hug unwanted deaths which are not specific to one country or the other.

Countries like India, Sri Lanka, USA, Canada, England and Australia have identified farming as one of the most dangerous industries associated with a high suicide rate than in general population. If only India is focused, among the major reasons for farmer's suicide are burden of loan, crop failure due to excessive rain, draught, low market price for the products and the stress associated with it. What makes it scarier is that most of the farmers happen to be male committing suicide fall in the age of 40+ leaving their families in distress. Farmers who commit suicide tend to use methods to which they have easy access because of their occupation, putting a question mark on the system. In India, due to the easy availability of pesticides, its consumption is the most common method of committing suicide raising the eyebrows towards the approach and efforts of the system.

The concept of Liberalization and Globalization has undoubtedly opened the doors of opportunities and development but these very concepts by and large have turned as curse for small farmers. A large stock of various crops is imported at cheaper rate, compelling the local farmers to drop their prices resulting losses or low profit margin. One such example comes from Maharashtra's Solapur where a 63 years old farmer Rajendra Chavan after travelling 70 kilometers to sell 512 kg of onions, shockingly receives only Rupees 2.49 as profit after all the deductions. It is only for the cases like this; heart breaking pictures of farmers throwing their harvests on the roads has become a common issue over the years in India.

One of the astonishing elements associated with agriculture is that it is not loss making sector to engage with which attracts the homemakers for farming but the gigantic trap of brokers, illegal practice of stocking the harvests do not allow them to have their hard earned fruits.

Studies show that suicide among female farmers is on the rise with the leading reasons being high levels of stress, fatigue and depression which they face not only because of farming operations but also because of confusion arising out of multiple roles they play. In addition to it, the loads of difficulties in farming affairs bring the habits of alcoholism and other harmful intakes in male partners, pushing them into physical, social and mental problems which definitely have a greater impact on the homemakers too.



However, the Government has started taking the cognizance of untimely and forced deaths of nation's bread winners. Several steps have been taken to address the issue viz. crops insurance, loans at cheaper rate, usage of development communication, awareness and workshops on modern methods of cultivation but still the problem is far from over and thus, calls for more concrete measures to safeguard the farmers from all the issues which compel them to end their lives.





Poridhi Baruah

Assistant Professor
Department of Social Work

Social Work a profession and not Charity: A century old debate in the profession of Social Work

Many a times it is always misinterpreted that social work is associated with charity. To a great extent it is true but as well as has a vast difference. The debate related to charity and social work profession as an empowerment approach has existed for more than a hundred years ago. Although it is true that the concept of social work initially has its derived its roots from religion, where it seeks to encourage giving charity to those who are in need which was limited to food, clothing shelter and medicines. However, with fast change and rapid development of the society different problems have started developing which requires scientific investigation. Charity is a very limited concept which doesn't require much techniques, skills or methodologies. Although social work and charity are both aimed at helping individuals and communities in need, but they differ in several key ways:

Social work is a profession focused on addressing systemic issues, promoting social justice, and providing holistic support to individuals and groups. Social workers are trained professionals who use evidence-based practices to empower clients and advocate for social change.

While, Charity typically involves providing assistance, such as food, clothing, or money, to those in need. It often addresses immediate and short-term needs without necessarily addressing the root causes of poverty or social issues.

Social workers often engage in long-term relationships with clients, working to address underlying issues and improve their overall well-being. Their interventions aim for sustainable change.

While, Charity often provides short-term relief, offering immediate assistance to those facing crises or emergencies.

Social workers undergo formal education and training, which includes coursework and supervised fieldwork. They adhere to a code of ethics and professional standards.

While, Charity work can be done by volunteers or organizations without specific professional training or oversight.

Social workers often engage in advocacy and policy efforts to address systemic issues and promote social change. They work to improve the overall conditions that lead to social problems.

While, Charity work typically focuses on providing direct aid rather than advocating for broader societal change.

Social workers aim to empower individuals and communities to become self-sufficient and make informed choices about their lives.

While, Charity can sometimes inadvertently create dependency when it solely provides handouts without addressing the underlying causes of need.





Nazrana Nazrin Akhtar

Assistant Professor
Department of Social Work

The Power of Empathy in Social Work Practice: Lessons for the Present

In the ever-evolving field of social work, one timeless virtue has consistently stood the test of time – empathy. As a professor in the Social Work Department, I've witnessed the profound impact that empathy has on our practice, and I am convinced that its significance is more crucial now than ever before.

Empathy is not just a buzzword or a mere quality; it's the cornerstone of effective social work. Empathy enables us to see beyond the surface of issues and explore the unique and often complex circumstances of the individuals we aim to help. By actively listening and putting ourselves in their shoes, we can gain invaluable insights into their needs, experiences, and challenges. This deep understanding empowers us to tailor our interventions, fostering a sense of trust and collaboration that can lead to long-lasting positive changes.

Moreover, in today's fast-paced and digitally driven world, where human connection is often strained, empathy has the potential to bridge the emotional gaps. It offers a lifeline to those who may be feeling isolated, vulnerable, or marginalized. As social workers, we have the privilege and responsibility to be empathetic, compassionate guides for our clients, helping them navigate the complexities of their lives.

Empathy isn't just a soft skill; it's a practical tool that leads to better results in social work. As we strive to adapt to the changing landscape of our profession, let us not forget the enduring power of empathy. It not only enriches our practice but also serves as a guiding light of hope for those who rely on our support. In these challenging times, it is through empathy that we can continue to make a positive impact on the lives of those we serve.





Nabanita Dutta

Assistant Professor
Department of Social Work

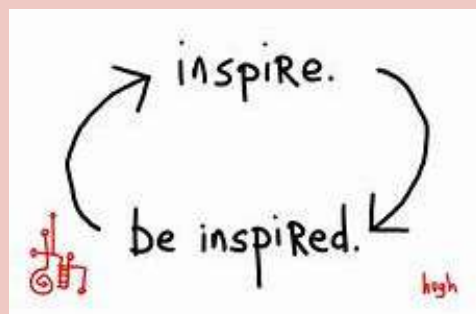
ASPIRE TO INSPIRE

In a developing country like India where many social issues prevail like poverty, unemployment, unequal opportunity, racism, employment discrimination, child abuse and neglect to name a few, witnessing such situations around us, we always have this urge to make our society free from the problems/sufferings and often tend to question ourselves- 'How can I bring changes in the society?', 'How can I make a difference to the world around me?', 'From where to start it all alone?' etc.. And thus we come to a position where we feel helpless as we alone can't resolve such big issues. To get through the dilemma let us understand a model given by Dr. Stephen Covey in his bestseller book called "The seven habits of highly effective people." In this book there is one particular model where Covey divided life's issues or challenges into two parts- (i) "The circle of concern", these are the things that we are concerned about but we alone can't really change them. For example global warming, pollution, natural calamities, communism, deforestation etc.. As an awakened citizen we are concerned about these issues, we want to do something about it, but we feel powerless over such issues, and if we focus all our energy and time on the circle of concern, we are going to feel negative. And on the other hand, there is a smaller circle which is called (ii) "The circle of influence" which means that there are small and significant things nearby us which are under our direct control and we have the power to change them. We don't need huge money, big plans nor any one's permission to start doing these things. This model suggests to redirect our focus from the big issues which we are concerned about but we are powerless over it to which we have power and we can do something about it. For example, a person wants to help all the vulnerable people of the society, that's a big goal which is nearly impossible to achieve, but he can help one person at a time and then help another person.

Through this small act he/she can influence the closest one to do the same and when vast majority of humanity will operate from circle of influence it will make a difference in society leading to the circle of concern. As we focus inwards on what we can do today within our abilities to help others, tomorrow we will see the circle is growing bigger , we can comprehend it as a “butterfly effect.” It simply means that any act of kindness no matter how small it might be has a ripple effect across the world. One person can set an example of kindness to many others.

“Aspire to inspire” means the drive we have, to inspire ourselves and others, making a difference in everyone’s life. Once the person aspires, he/she recognizes their capability to inspire others as well. ‘Action speaks louder than words.’, We can be inspiration to others by setting example through our actions.

Being into the field of social work a person gets training to work with all types of vulnerable people, communities and make their life better. Social worker understands the inner connection between people, communities, societies, laws and policies and when those connection tangles at any of these levels, problems appears in society. So they learn evidence based interventions that can help solve the problems around those tangles. And with that they can make powerful change happen. However to work for any noble cause at individual level we don’t always have to wait for the professional social workers, it can be initiated by any one individually, the thing just he/she needs is the aspiration to do.



Writumoni Sharma

Assistant Professor
Department of Social Work



‘Mother Language’ – A base to learn foreign language.

Information's, Ideas, Culture pass from generation to generation, which is called “transmission”. In transmitting all the history, culture, Language plays an immense role and helps to make things easier and understandable. It is the most distinctive feature of humans. God has given this special ability to humans only. But human language did not start in a day or over a year. It developed gradually over time, like the human species developed. This is the most amazing development in the whole world. The most natural communication system is the human language, through which we can express our unlimited thoughts, convey information, give order's, speak sentence, listen to others and what not. Every language spoken in the world represents a special melody and culture. The mother language is certainly one of the most precious treasures in our lives.

It is very fascinating to know or study how a toddler starts learning slowly a specific language. And what we call it as mother tongue or first language. A mother tongue is one's first language that one learns at babyhood rather than a language learned at school or as an adult.

Language development is an important part of child development which supports our child's ability to communicate. It also helps them to express and understand feelings, think and learn to solve problems, develop and maintain relationships. Learning to understand, use and enjoy; language is the first step in literacy. The best way to encourage our child language development is to do a lot of talking together, using different words in different contexts, responding his/her attempt to communicate. Thus, repeating helps in building language development for our child. It supports many other aspects of development like cognitive, social and literacy development. Once they start developing different aspects, their skills, knowledge and values; they are being able to communicate and understand multiple languages, and this is what we can call it to be the second language.

It is generally observed in today's global scenario that many parents are so excited and focus at the prospect of teaching their child how to speak English, or most of the time in home; conversation between parents and child takes place in English. They neglect the most important foundation in learning English which is the fluency in their mother tongue. It is very important that parents should speak their mother tongue at home as it also develops expressive language allowing their child to communicate their feelings in a healthy way.

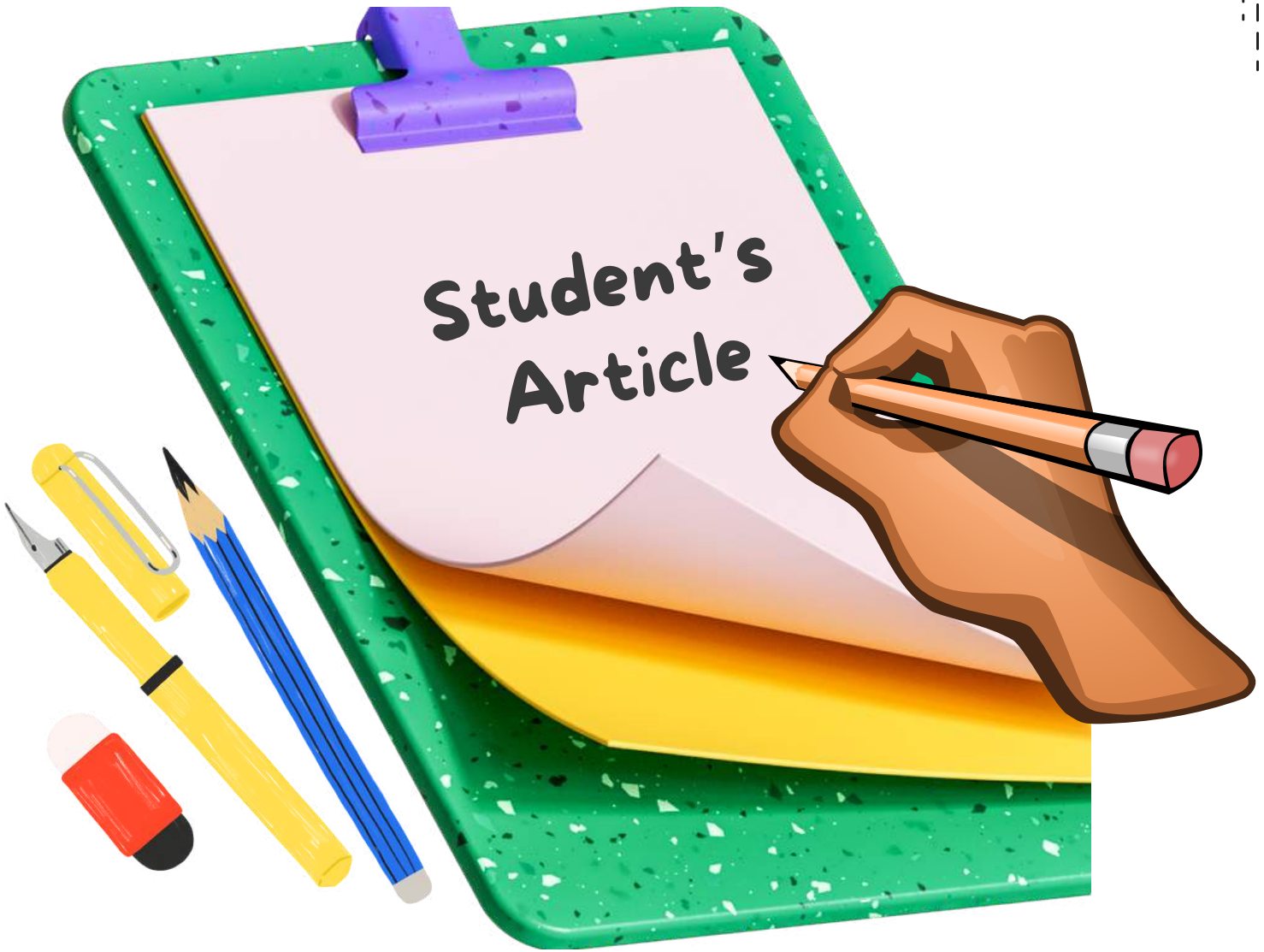
But to learn the second language(L2), L1 i.e. mother tongue is always the base of it. The benefit of knowing our first language so well makes language learning even more accessible and faster. For e.g. if someone speaks in English, and the receiver L1 is Assamese then immediately our brain makes a picture or understanding level takes place in L1. It means that first language is the key to the second language. Those who have mastered their mother tongue have laid the foundation for learning other language. Language holds the key to understanding and without it any concept taught is meaningless. Students who study in their mother tongue finds it easier to learn the information presented, retain it for longer periods and find it easier to understand the concepts and relate them to real life.

Thus learning mother tongue is very important and is the first step in learning additional language. It is also important in order to have a strong language skills later in life. It helps to connect them to their culture and history. These may be some of the reasons why NEP 2020 is incorporating MIL in the present curriculum. (The NEP 2020 has 'emphasized' on the use of mother tongue or local language as the medium of instruction till class V while ; recommending its continuance till class VIII and beyond.)



Section III
Student Corner

**Student's
Article**



WINNERS NEVER QUIT

Gazala Kauser (MSW 3rd Semester)



When Antima was born, many demised instead of rejoicing. Some had not even feared crushing her to death when she snuggled inside the womb of her mother dreaming of stepping into a new life. The family who anticipated a boy again, named her Antima (from Antim), for they wanted her to be the last girl child in the family.

When Antima grew, she was considered inferior to her brothers, she did all the household work but was never appreciated, they said that's what she was born to do, it was her fate to work in the kitchen, get married and have children. She wanted to study but she could not, they always remarked she was 'Paraya Dhan'. Her alcoholic father would beat his wife each day and a sobbing Antima would apply ointment to her mother's wounds in the night. Seeing her alone one night her uncle tried to abuse her, she struggled hard but chose to remain tight lipped about the incident.

Few months passed and Antima fell in love with a guy next door, she was in a state of bliss when the affair was disclosed and sooner, she was married off to a complete stranger.

Five years later, when she couldn't produce children with her husband, people started calling her 'Baanjh'.

God was merciless again and painted her life with white, she was now a 'Widow'. To make a living, she moved out of town and picked up a job. Knowing that she was alone in the new place, many wrong people started thriving on their dirty intents. Apparently, Antima was harassed by her boss at workplace. She was broken again, but this time she decided to fight back and lodged a complaint against her boss. It was a battle between an influential man versus a woman who was all alone by her side. The issue flared up and after knowing the story of Antima many woman organizations came forward for help. A huge wave of support spread across the nation and Antima won the case.

'Never, Never, Never give up in life! Antima smiled as she posed for an interview on the rooftop building of a news channel.

Don't fear, for you are a **WOMAN**

Bishal Sarania (BSW 5th sem)

Who said you're weak
You're the strongest being in this world
The life giver
The life bearer
The life nourisher.
All the battles you have fought throughout the
history
Is worth the blood you bleed every month.
Who says you're weak?
The men? Most men actually fear you
Fear of outsmarting them
Fear of losing their so called 'masculinity'
But you hold the power to prove them wrong
Don't leave them behind, take em' with you
For you're the strongest being in this world.
For you are called **WOMEN**.



সপোন

- সিদ্ধার্থ সিংহ
তৃতীয় ষাণ্মাসিক
সমাজ কৰ্ম বিভাগ

হৃদয় খুলি দিলেও যদি নাহে সুখৰ ঘুমটি
আঁকোৱালি থাকিলেও যদি আঁতৰি যায় জীৱনৰ সুৰাগমণি ,
সদায় কোৱাৰ দৰেই ...

নিজেই নিজৰ বাবে ন-নক্ষত্ৰ হ'বা
বুকুৰ সপোন জীৱন হৈ নুফুলালৈ নিজৰ বাবেই যুঁজি যাবা।
যদিও ...

জীৱন, মৃত্যু , সুখ, দুখ
একেটি মুদ্ৰাৰেই ইপিঠি-সিপিঠি ,
সেয়ে ধুমুহাৰ নিশাও হাৰি নাযাবা, একলগে আমি যুঁজিম
অত পৰাজয়ৰ পিছতো আকাশলৈ চাবা ॥

সপোনে যদি শিলৰ অভেদ্য ৰেখা পাৰ নকৰে
বুকুত হাত থৈ দৃঢ়তাৰে ক'বা

"মই যুঁজিম, মই গঢ়িম"
তেতিয়া আঁৰ-বেৰহীন ভয় মূল্যহীন।

THE FLOATING MARKET OF KASHMIR

Dipshikha Baruah
Batch 2021-23

Contemplated to be 'HEAVEN ON EARTH', Kashmir is a blessing to the eyes in its natural beauty. Located in the northern part of the Indian subcontinent, divided between India and Pakistan, Kashmir remains extremely highlighted for its picturesque lakes, one of which is Dal Lake in Srinagar. Famous for its houseboats, a famous age-old market is still standing strong in the lake despite of the harshness. In the recent time where people are looking forward to more fast way of development the market has still kept its heads high presenting its uniqueness. The authentic floating market is holding its feet in the scenic Dal lake of Kashmir.

Known to be first discovered by a Japanese photographer, the Floating market of Kashmir is a central hub that produces a huge number of vendors and along with it paints a picture of one of unique glimpse of life in Kashmir. The snowy portraits of Kashmir which is also famous for its enchanting snow capped peaks is already a golden bliss to the eyes to visualize heaven but apart from that the floating market uniqueness cannot be denied. Another pinned up point is that it is an appealing landmark for visitor's enjoyment, representing calmness, serenity, peace, and tranquility and offers some of the best shots of Kashmir.

To absorb the alluring beauty, early morning is the best stop at the clock. The Dal Lake, known as Kashmir's "Jewel in the Crown", is the state's most visited lake specially for its freezing captures.

With the start of the early morning hours, the cultivators of Dal Lake move out with their boats of paradise embroidered with that of fresh vegetables and other items. The gathering place is locally known by the name "Gudher". The vendors with thick coating of clothes over their whole body and then throng to this market with Shikaras laden with vegetables and most interesting aspect of the market is that it only lasts just for a couple of hours. It has been often said that the market gets closed as the first ray of sunlight touches the lake. The best time to visit the market is from approximately in between 5 AM till 8 AM.

The authenticity of the market lies down in the fact that this market is one of the few places where the barter system is still breathing and is still practiced by the vendors. However it accepts the contemporary monetary system for tourists and sellers while partially adopting the traditional exchange system with the local traders.

Magnifying, a more interesting fact of the market is that this market has a denial to selective or partial sale of items; rather goods are sold at a wholesale rate. Along with the inclusion of several fresh vegetables the delicacy of Kashmir's 'nadru' (lots roots) are among the things which are extended for sale, most of them are grown in the wetlands. From the pages of history it has been exposed that the market has been around for centuries dating back to the reign of Kashmir's eighth rulers. The shops that floats are not permanent but however in this time of advancement the simplicity and the authenticity of the market as well as maintenance of the age old traditions is what is keeping alive its beauty still attracting tourist to a great extend.

Where the beauty of Kashmir is being parallely compared to that of heaven, the fact cannot be denied of how disturbed the parts of Kashmir and its dark history which still gives goosebumps to many till date.

Similarly, the Dal Lake of Kashmir has also faced a lot of harshness with the ongoing of time. The freshness of the water has been polluted sewed with toxic elements where the quality of grown vegetables is deteriorating day by day. Moreover the flood in Kashmir added more weight breaking the market in uncountable places. But in the recent times the market is again gaining its roots after years of repairment both naturally and with the efforts of the human.

Kashmir has always been in the pages of controversy, be for its heavenly beauty where paradise rests freezing the eyes of everyone or for the political issues and the forever be to many soldiers. Amidst this chaos the floating market of Kashmir is still standing still and sustaining the lives of many. The simplicity and the urge to keep the age old customs alive has been the centre of attraction to many specially tourists who are a bit too enthusiastic to know about its legitimacy. Considered to be the only floating market of the country the genuineness of the market should be preserved as changes has been drastically. People are looking forward to easier sources of income, but what keeps a place is its roots bringing an identity to the people, to the place which should be preserved at any cost.

মৰমৰ শিপাৰে

ধীৰাজ শইকীয়া
MSW 3rd semester.

অশ্ৰুসিক্ত প্ৰণয়ৰ সুভাষ সনা
আলফুলিয়া মৰম বোৰে
বিষাদৰ গান গাই যায়!
তেজপিয়াৰ ভালপোৱা বোৰে
ৰক্ত পিপাসু মৰম বোৰে
হৃদয় দহি যায়....!
বিৰক্তিকৰ কাহিনীৰ
আধা লিখা দস্তাবেজ!
সুকীয়া অনুভৱৰ
আউল লগা কাহিনী!
এক পক্ষীয় ভাৱে
গোপনে ৰখাৰ কিছু অজুহাতত
হৃদয়ক জলাঞ্জলি দিয়া হয়!!

GLOBAL WARMING



Rishu Chetry
BSW 3rd Semester

Global Warming on climate change has today become a major threat to the mankind. The Earth temperature is on the rise and there are various reasons for it such as green house gases emanating from carbon dioxide emissions burning of fossil fuels or deforestation.

Climate change refers to long-term shifts in the earth's weather patterns; global warming is the increase in the earth's average surface temperatures caused by human activities such as the burning of fossil fuels. Causes of climate change related to human activity are referred to as anthropogenic; natural causes of climate change are called naturogenic. Earth's atmosphere contains several gases that trap heat from the sun and prevent it from escaping into space. These gases are called greenhouse gases.

Global warming could have a long-term impact on ecosystems and wildlife habitats, negatively impacting Earth's biodiversity. Economic and political issues play a role in how governments respond to global warming and climate change.

Global warming has been linked to more frequent heat waves. July 2021 was the earth's hottest month on record. The rise in the levels of Carbon dioxide (CO₂) leads to substantial Increase in temperature it is because CO₂ remains concentrated in the atmosphere for even hundred of years. -Due to activities like fossil fuel combustion for electricity generation, transportation, and heating, human beings have contributed to Increase in the CO₂ concentration in the atmosphere. The Sea levels are constantly rising as fresh water marshlands, low-lying cities and island have been inundated with sea water. There have been changes in rainfall patterns, trading to droughts and fires in some areas and flooding in other areas. Ice are constantly melting posing a threat to the polar bears as there feeding season stands reduced . Glacier are melting and animal population are gradually decreasing as there has been a widespread loss of their habitat. Several measures are needed to solve this problem of global warming .We can contribute towards less production of CO₂ by adoption of renewable energy and to recycle more products Especially, we should reduce our over-dependence on electricity as it is one of the main sources of carbon dioxide.

ANNO DOMINI

Sambha Lakiang.
BSW 3rd semester

In this digital age,
We are both lost.
How sad to say, knowledge is understanding as an issue.

The beauty of the innocent is considered as an ignorant,
The materials remove
moral.

Kindness are found in the
Challenger deep.
Rare are the humanity amount the human.

The madness of leader's praise as the powerful souls,
To create one own interest damages, the whole education of young ones.
Freedom is known as chains of invisible.
And the nature cries for help.

Paper of validation marks as well prepared collection of observation and
understanding,
The one who deserves it has nowhere to be found.
Children and adults are both adults.
How sorrow to say I'm the part of the society for today.



The College

Niki Begum
MSW 3rd Semester

In the hallowed halls where knowledge blooms,
In the college's heart, where futures loom,
I pen these words, a humble ode,
To the students' journey, on wisdom's road.

With books in hand and dreams held high,
We reach for stars up in the sky,
In classrooms filled with thoughts and light,
We learn and grow, day and night.

Professors wise, with wisdom to share,
Guiding us with patience, showing they care,
Through trials and tests, we persevere,
For in knowledge's embrace, there's naught to fear.

Friendships forged in study's flame,
In this diverse tapestry, we find our aim,
From lectures to labs, we strive to be,
The best versions of ourselves, you see.

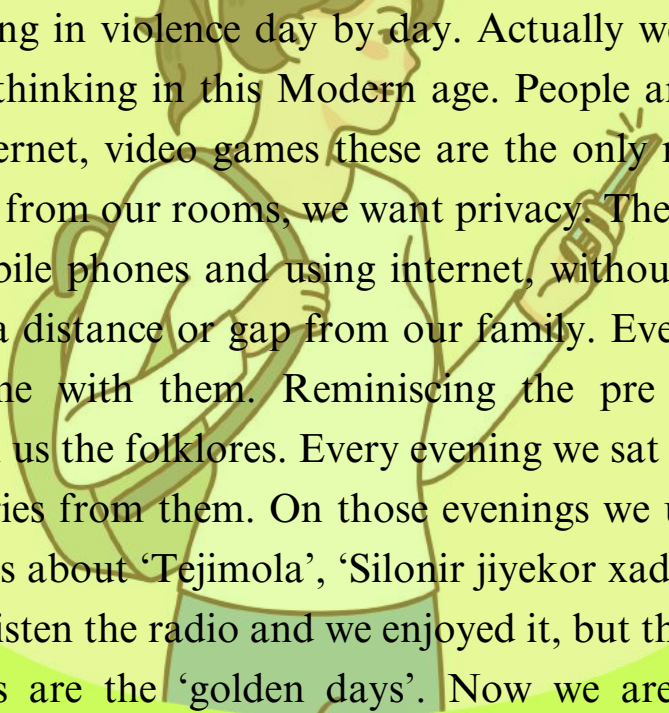
College days, a chapter profound,
Where lessons abound, and laughter resounds,
In this magazine's pages, we unite,
To celebrate the journey, day and night.

So here's to the future, to what lies ahead,
In this college of dreams, where our paths are spread,
May knowledge be our guiding star,
As we journey forward, no matter how far.

Modernisation

Smritirekha Deka
Msw 3rd Semester

This is the 21st century. What does come in our mind when we listen to the particular word 'Modernization'? Though we live in this Modern era but our state of mind doesn't change till date. Modernity does not only mean technology, industrialisation, and urbanization but also mean the progress of human mind. We humans are demanding ourselves civilized and want to make and get always better. We want developments in our lives. But in the name of modernization and civilization, a question emerges here – though we consider ourselves civilize, educated, modern but are we really civilize? Are we really modern and educated? In the name of development we're destroying nature day by day. We're ruining our mother earth. Nothing can be spared from our savagery or brutality.

An illustration of a woman with brown hair in a ponytail, wearing a white shirt and a blue skirt. She is holding a mobile phone to her ear with her right hand and another mobile phone in her left hand. The illustration is set against a light green circular background.

We humans are involving in violence day by day. Actually we have lost our innocent mind and non violence thinking in this Modern age. People are busy with own selves. Now Mobile phone, internet, video games these are the only motives of our lives. We don't want to go outside from our rooms, we want privacy. The whole day we lay on the bed , just using our mobile phones and using internet, without any hard work. As we want privacy we create a distance or gap from our family. Even we don't have time to talk or spend little time with them. Reminiscing the pre internet era when our grandparents used to tell us the folklores. Every evening we sat with our family elders to listen the imaginary stories from them. On those evenings we used to sit on a mate on our yard and they told us about 'Tejimola', 'Silonir jiyekor xadhu', 'ouukuori', etc. We, the whole family use to listen the radio and we enjoyed it, but these days will never come back again. Those days are the 'golden days'. Now we are completely living in a different world. We want modernization not outdated one. We want developments. We are losing our own tradition and culture. But a question will emerge every single time, Are we really fulfilled with the adaption of the needs and habits of modern life?

LIFE

Chanchal Jain
BSW 3rd Semester

Life is a journey,
Full of ups and downs.
There are times of joy,
And times of sadness.
But through it all,
We must keep going.
We must learn from our mistakes,
And grow stronger.
Life is a gift,
And we must cherish it.
We must make the most of every moment,
And live life to the fullest.
So don't be afraid to take risks,
And don't be afraid to follow your dreams.
Life is too short to play it safe.
Go out there and make your mark on the world.
Show everyone what you're made of.
And most importantly,
Never give up on yourself.
You are capable of anything you set your mind to.
So go out there and live your life to the fullest!



SOCIAL ISSUES

Ngoimai Atraham
BSW 3rd Semester

Social issues are a problem that influence the common citizen of a country .The social issues can be part of our traditions and cultural stereotypes .In the world every country faces different social issues like racism, global warming, corruption or illiteracy. In India more than 29%peoples live in poverty .There are lots of social issues that we are facing right now, in some places people faced poverty , child labour and etc. In India most of the children are child labour and they are working for their survival and to feed their family's Mostly child labour is a major social issues that damage the lives of young children And also child marriage exist in social issue and dowry is a very serious and common social issue. Social issue is also a source of a conflicting opinions on the ground of what are perceived as morally correct or incorrect person life or interpersonal social life decisions, social issues are distinguished from economic issues however, it have both social and economic aspects.social issues have a massive lousy effect on our society and ultimately ,it affects all of us. In order to solve some social issues, we need a common approach .No society is free from social issues ,almost every one of them has some social issues or the other. So for the betterment of social issues we have to come together to fight against the social issues.

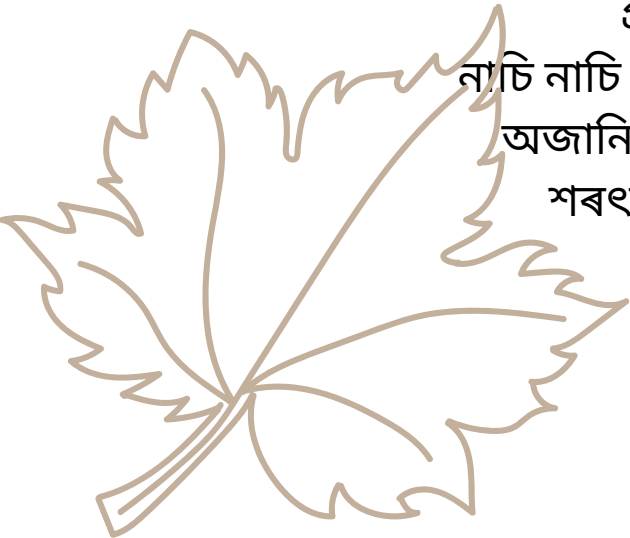


শৰৎৰ বতৰা




ময়ূৰী বৰা
তৃতীয় সান্মাষিক
সমাজ কৰ্ম বিভাগ

পুৱাৰ বেলিটিৰ কোমল পৰশত
সাৰ পাই উঠিছে পৃথিৱী ,
চাৰিওফালে বিয়পি পৰিছে
শুকুলা শেৱালীৰ সুবাস ,
পদূলিৰ দুৱৰি বনবোৰেও
ৰাতিৰ নিয়ৰত যেন
স্নান কৰি উঠিছে ,
আঘোণত সোনোৱালী হৈ উঠিবলৈ
সেউজীয়া পথাৰখনেও চোন
যো - জা চলাইছে ,
পুখুৰীৰ পাৰৰ সেই কচুজোপাৰ ,
পাতত যেন বৈ গৈছে
নিয়ৰৰ মুকুতা ,
আৰু
চাৰিওফালে বাজি উঠিছে আজি
ঢাক ঢোলৰ মাত ,
যেন শাৰদী ৰাণীয়ে পৃথিৱীত আগমনৰ
প্ৰস্তুতি চলাইছে,
নাচি নাচি বালিমাহী চৰাইজনীয়েও
অজানিতে আহি চোন দি গ'ল
শৰৎৰ আগমনৰ বতৰা ।



MY MOTHER

Mehmud Alom
MSW 3rd Sem



My mother is an ordinary woman she is my superhero. In every step she supported and encouraged me. Furthermore, her every work; persistence, devotion, dedication, conduct is an inspiration for me. In this article, I am going to talk about my mother and why she is so special to me.

Why I Love My Mother So Much?

I love and respect her not only because she is my mother but because she has taken care of me when I was not able to speak. At that time, she has taken care of all my needs when I wasn't able to speak. Additionally, she taught me how to walk, speak, and take care of myself. Every big step that I have taken in my life is all because of my mother. If she hasn't taught me how to take small steps then today I won't be able to take the bigger steps.

Her Love:

She is an essence of truthfulness, love, and sincerity. Another reason is that she showers her family with her blessing and unconditional love. Furthermore, she gives us everything but never demand anything in return. The way she cares for everyone in the family inspires me to do the same in my future.

Also, her love is not just for the family she treats every stranger and animals the same way she did to me. Due to, this she is very kind and sensible towards the environment and animals.

Her Strengths:

Although she is not physically very strong she faces every hurdle of her life and of the family too. She motivates me to be like her and never submit in difficult times. Above all, my mother encourages me to improve my all-round skills and my studies. She motivates me to try again and again until I get success in it.

A Companion when in Trouble:

Whenever I was in trouble or get scolded by dad I run towards my mother as she is the only one that can save me from the troubles. Whether a small homework problem or a bigger problem she was always there for me, become my light and guide me in that darkness. Also, if I can't sleep at night she would hold my head on her lap until I fell asleep. Above all, she never leaves my side even in the hardest of the times.

Conclusion:

Every mother is special for her child. She is a great teacher, a lovely friend, a strict parent too. Also, she takes cares of the need of the whole family. If there is anyone out there who loves us more than anyone is our mother. Not just for my mother but for every mother out there who lives her life for her family deserves praiseworthy applause.



"Guardians of Empathy: A Poem for a Safer World"

Ankita Bora
BSW 5th Semester

In a world where hearts unite and care,
We strive to end a nightmare's glare.
Through empathy and strength we stand,
To protect, empower, hand in hand.
Respect and kindness pave the way,
For brighter nights and safer days.

A world where consent guides every stride, Empowering souls, side by
side.

Educate, uplift, and teach,
For every voice has the power to reach.
With open minds, we take a stance,
Creating change, advancing the dance.
Let's build a future free from fear,
Where all are valued, loved, held dear.
United, we'll rewrite the fate,
And make the world a safer, kinder state.

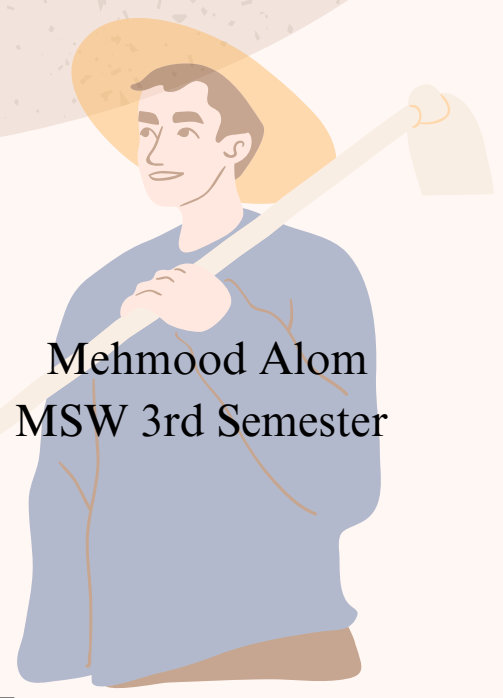
মই এজন খেতিয়ক

Mehmood Alom
MSW 3rd Semester

মই হলো খেতিয়ক
কৃষি কৰ্মই মোৰ কাম
সময়ে-সময়ে উৎপাদিত খাদ্যৰ
নাপাওঁ উচিত দাম ।

সোনোৱালী পথাৰত ব্যস্ত মই
খবৰ লবলৈ নাই কোনো
কৃষি কৰ্মই মোৰ ধৰ্ম
আছেনে কৃষি বিভাগ জানো?

মাটি পানী মোৰ লগৰী
আৰু নাঙল-গৰু
পোহপাল দিবলৈ মই সক্ষম
পৰিয়াল মোৰ সৰু ।





অপেক্ষা.....

Dewahuti Bordoloi
MSW batch 2021-23

বৰষুণ এজাক অহাৰ আগমূহূৰ্ত্তত যেনেদৰে আকাশ খন ওন্দুলি
থাকে, তেনেকৈয়ে স্নেহাৰ মুখখনো খং আৰু অভিমানত ওন্দুলি আছে।
আজিওনো বাৰু সমীৰে ইমান দেৰি কৰিব লাগে নে?
সেই সন্ধিয়া লগাৰ পৰাই তাই সাজি- কাঁচি পদূলিৰ মুখলৈ চাই বৈ আছে..
আজি সিঁহতৰ বিয়াৰ দ্বিতীয় বিবাহ বাৰ্ষিকী সেয়েহে সমীৰে ৰাতিৰ সাঁজ
বাহিৰতে খোৱাৰ কথা অফিচলৈ যাওঁতেই তাইক কৈ গৈছে,
এতিয়া ৯ বাজিবৰ হল সমীৰৰ দেখা দেখি নাই।
ফোনও ৪/৫ বাৰ কৰিছে একো উত্তৰ নাই তাৰ
স্নেহা লাহে লাহে অস্থিৰ হব ধৰিলে
হঠাৎ তাইৰফোনটো বাজি উঠিল ...
"সমীৰ দত্তৰ ঘৰ হয়নে"?
উম হয়।
ফোনটো থৈ তাই নিৰৱ হৈ ৰল, দুচকু ভৰি পৰিল
হাত ভৰি বোৰ কঁপিব ধৰিলে
তাইৰ গৰ্ভত সিঁহতৰ প্ৰেমে পোখা মেলা কথাটো সমীৰক যে কোৱায়ে
নহল..
শোকত চিতকাৰ কৰি উঠিল তাই
নাই হবই নোৱাৰে, মোক তুমি এনেকৈ অকলশৰীয়া কৈ এৰি যাব নোৱাৰা...
এটা তীব্ৰ চিঞৰ। চৌদিশে নিস্তব্ধতা।

Poem

Bobita Das
MSW Batch 2021-23

SHE

The fight is not against others.

If it would have with others ,

She could have win it easily.

But this fight is with her self.

The self, that is so pure,

The self, that is so stubborn,

The self ,that is so ambitious.

She never recognized her worth

and that is the reason

she ends up hurting herself.

She is fragile and strong at the same time.

Because she know how to hide the storm inside her heart, with the smile on her
face.

Despite all her pain, she starts everything every day with a new enthusias

Shayari:

By: Sagarika Devi
MSW Batch 2021-23.

1) Kuch der ki khamoshi hai
Phir sor aayega
Tumhara to sirf waqt aaya hai,
Hamara daur aayega...

2) Kon aaya hai yaha Umar
Bitaane ke liye
Maine deewar par
Khudko kya likh diya,
Ek din baarishe hone lagi
Mujhe mitaane ke liye...





Isn't it beautiful

Bishal Sarania
BSW 5th Semester

Isn't it beautiful to live life
Without someone telling you how to live it?
Isn't it beautiful to love someone
Without them knowing you still love them?
Isn't it beautiful to know that you're worthy
Even if people say you're worthless?
Isn't it beautiful to pray to GOD
Even if he's invisible to your eyes?

Isn't it beautiful to...

Bishal Sarania
BSW 5th Semester



Bye Earth, hello Mars!

So you'll leave me,
For you have found a new one
So You'll leave me all alone
With all your un-dying creature.
What haven't I did for you?
I fed you when you were hungry
gave you water when you were thirsty
I gave you place which you can call home.
gave you space to build your rome.
I did everything for you,
For you; to leave me?

WILD FLOWERS

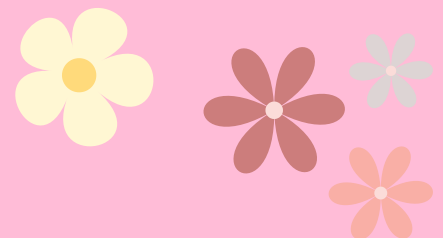
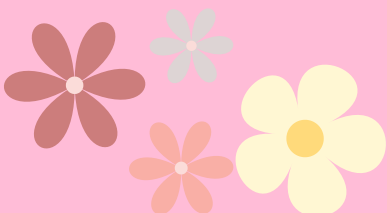
Dipshikha Boruah
MSW batch 2021-23

Oh you wild beauty!
Blooming flawlessly
In the wilds, in the meadows,
Peeped out of the cracked walls
Unseen, unremarked, uncelebrated.

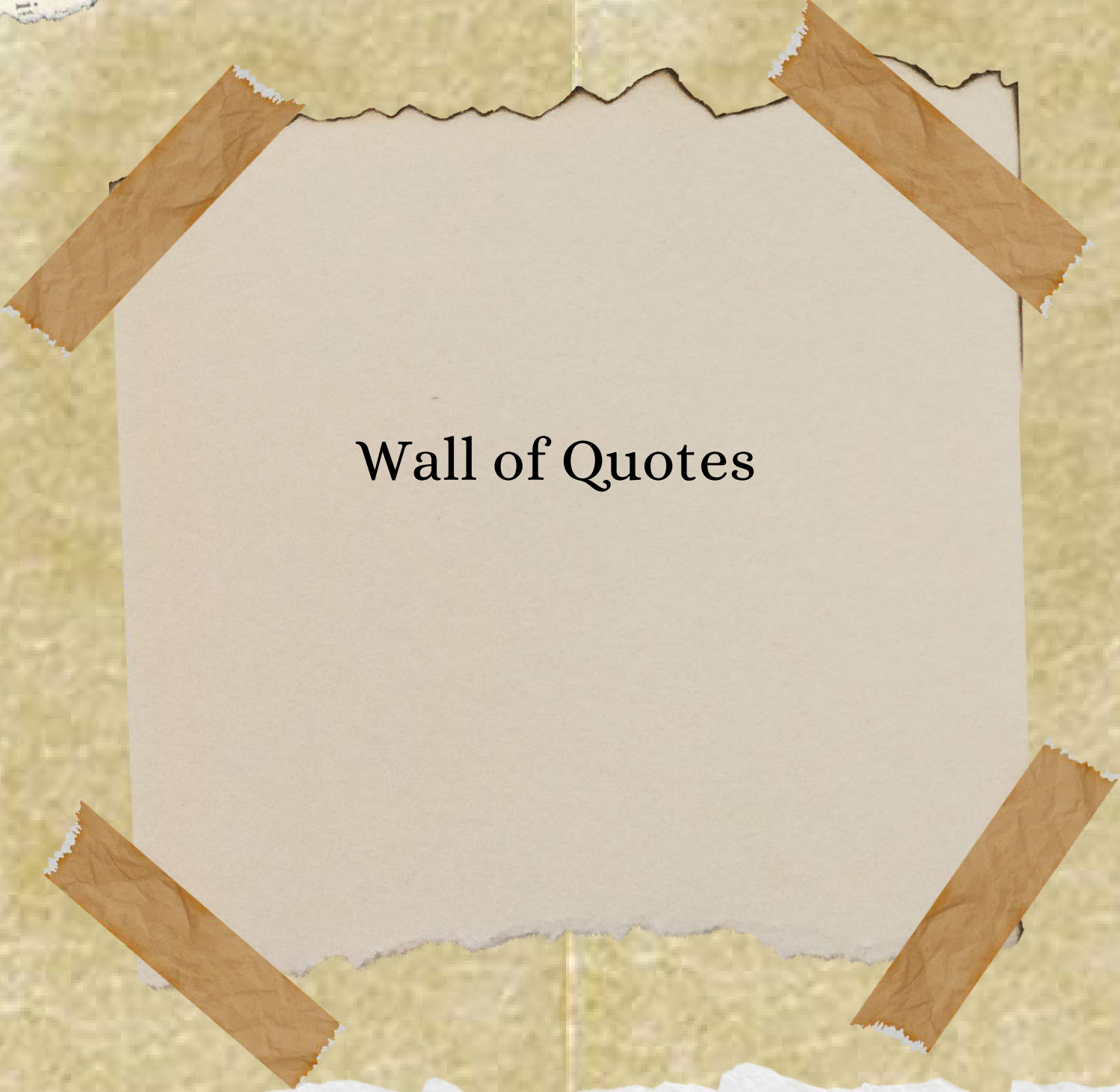
Free from any ostentation,
Portraying beautifully
In the blazing summer,
In the freezing winter,
Nodding the heads high in frightening thunderstorm
Heart lifted as the gentle breeze blows,
Shedding the beauty in relaxing autumn,
Reviving again in the embracing spring.

Oh! You exquisite wonder,
How do you accept everything?
With open arms
All alone in silence
With no complaints
So pretty , without envy
Against the highly maintained garden cousins
Unseen, untouched, unsung.

It's strange that the ramblers not notice you!
But still in pride
You shine every time,
For the unconditional lovers of yours,
Unaltered, unpampered, unnoticed,
Oh you wild beauty!



And out to
altho
n Rat
al w
me of yea
someh
lackth
lay.
watch the
night
ating,
or all i
s-plac



Wall of Quotes



Alone we can do so little; together we can do so much.

Social workers have worked hard and studied for years to become competent professionals who work to empower individuals and communities. Collaborating with other social workers and being part of interdisciplinary units can help in many ways. Social workers value interpersonal relationships, teamwork, and trust. By sharing their experiences with one another, social workers can share in the celebrations and challenges of their work.

— Helen Keller, U.S. author, educator, and disability rights advocate

It is not your job to save everyone. Some people are not even ready to be helped. Focus on being of service to those who are, and be wise and humble enough to know when the best service you can offer is to guide them toward help in another direction.

— Anna Taylor, award-winning New Zealand fiction author

The temptation to transform into a superhero social worker is inviting, yet unrealistic. Piles of paperwork list names, dates, and difficult situations, but not all can be attended to in one day. Asking for help is best.

— Anna Taylor, award-winning New Zealand fiction author

Given by : Siyati Tayang
BSW 3rd sem



Section IV
Activities Conducted by the Department



ACTIVITIES

CONDUCTED

BY THE

DEPARTMENT

Year 2023

Glimpse of different programmes organized by Department of Social Work in the year 2023

Date: 11th March'23: One day workshop on Yoga & Meditation.



Date: 18th March'23: Health Camp at Satar Gaon, Rani.



Date: 21st March'23: Observation of Social Work Day. The program was graced by Ms. Jahnabi Goswami, an Indian HIV/AIDS activist and the first woman from Assam in the Northeast to fight for this cause.



Fundraising event on the occasion of Social Work Day: Students displayed various handmade art & crafts collected from various Non-Governmental organisations to support their cause.



Guwahati, Assam, India
4QG2+F68, Dakshingaon, Guwahati, Assam 781034,
Lat 26.12592°
Long 91.750687°
21/03/23 12:53 PM GMT +05:30



Guwahati, Assam, India
4QF3+43Q, Lokhra, Guwahati, Assam 781040,
Lat 26.122928°
Long 91.752543°
21/03/23 12:46 PM GMT +05:30

Date: 25th- 31st March'23: Rural Camp conducted for Social Work at Bonsum Bagan of Panbari Range, Manas National Park, Chirang District.



Date: 25th March'23: Students of Social Work Department opened a Community Library in Bonsum Bagan of Panbari Range, Manas National Park, Chirang District.



Date: 28th to 30th March: Study Tour to Meghalaya where they explored two different organisation named Regional Resource and Training Centre (RRTC) in Umran and Ramakrishna Mission located in Cherrapunji.



Field work activities of Social Work Students



Observation visits of 1st Semester Social Work Students



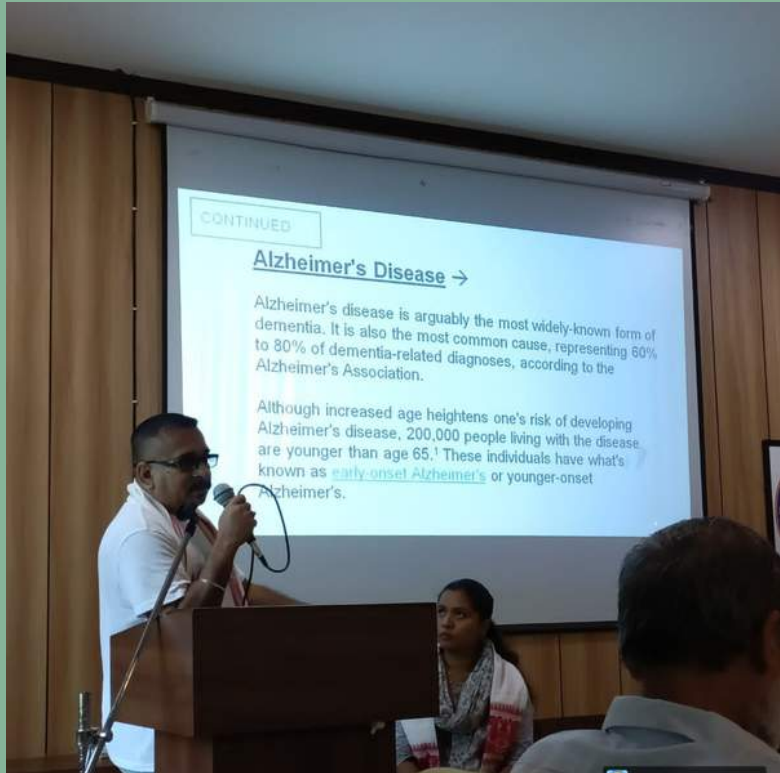
Date- 9th September'23 : With a view to sensitize our students for their future roles for social building, the Department organized a Movie Screening of "Jai Bhim". Jai Bhim is one such impactful reality check which shows the dark sides of our society touching numbers of social evils. Post screening, a discussion was held regarding their takeaways from the movie.



Date- 21st September'23 An awareness programme on Deceased Organ Donation jointly with Zublee Foundation, Guwahati, as part of SEWA PAKHWADA (a Govt of India initiative)



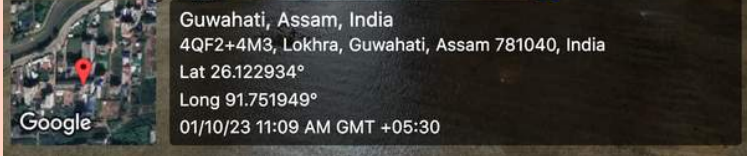
Date: 23rd September'23 : Awareness programme on Alzheimer's Disease. Dr. Sushil Agarwalla, MD in Psychiatry and a renowned consultant at Apollo Hospital, ASHADEEP, and medical officer in Opioid Substitution Therapy at GMCH, along with Mr. Hrishikesh Bharadwaj, Managing Director cum CEO of AIDMASH, were the esteemed resource persons.



Date : 24/09/23 : Students of Social Work Department Volunteered in the 'Divyang jyoti Mahotsav' in collaboration with CareU365 to celebrate the abilities and talents of differently-abled individuals in our community.



Date: 01/10/23 : NSS Unit of NEF College, with the students of Social Work Department has organised a cleanliness drive on 1st of October,2023 as a part of 1 hour Shramdaan for Swachata.



Section- V
Department Toppers

RESULTS OF STUDENTS
SOCIAL WORK DEPARTMENT



CONTENT OF TOPPERS RESULT

MSW Batch (2021-2023)

BSW Batch (2020-2023)

MSW 2nd Semester, June 2023

BSW 4th Semester, June 2023

BSW 2nd Semester, June 2023



MSW Batch 2021-2023

RESULT OF SEMESTER TOPPERS



DIPSHIKHA BORUAH

Percentage scored: 95%



JESMINA BEGUM

Percentage Scored: 88%



ARCHITA BORUAH

Percentage Scored: 86%



PREETI BORAH

Percentage Scored : 86%



ADITYA MITRA

Percentage Scored: 85%



MSW Batch 2021-2023

RESULT OF SEMESTER TOPPERS



HIYANA DAS

Percentage scored: 82%



SAGARIKA DEVI

Percentage Scored: 81%



BSW Batch 2020-2023

RESULT OF SEMESTER TOPPERS



DAWANSAPHI SHYLLA

Percentage scored: 89%



NANDITA DAS

Percentage Scored: 81%



MSW 2nd SEMESTER, June 2023

RESULT OF TOP 3 POSITION HOLDERS



MOYURI BORAH

Percentage scored: 89%



MRIDUSHMITA RABHA

Percentage Scored: 88%



ZHOVINO ZHASA

Percentage Scored: 88%



BSW 4th SEMESTER, June 2023

RESULT OF TOP 3 POSITION HOLDERS



YASHILEMA IMSONG

Percentage scored: 97%



SUSANAH RAI

Percentage Scored: 94%



PARSIA ALAM

Percentage Scored: 90%



BSW 2nd SEMESTER, June 2023

RESULT OF TOP 3 POSITION HOLDERS



BHAGYANSHI NAYIL

Percentage scored: 86%



MASUMA BEGUM

Percentage Scored: 86%




KASHMITA DAS


Percentage Scored: 85%

Section-VI

Student's Achievement



**ACHIEVEMENT OF THE
OUT GOING BATCH
OF
SOCIAL WORK DEPARTMENT,
2023**





Ms Jesmina Begum, a MSW student from the outgoing batch of 2023 has been placed in VimoSEWA as a District Field Coordinator .



Karishma Gogoi , a MSW student from the outgoing batch of 2023 has been placed at Apollo Hospital, Guwahati as a Medical Social Worker



Aditya Mitra, a MSW student from the outgoing batch of 202 got placed at SATHII organisation at Srijangram Block as Community Resource Coordinator .



Dipshikha Boruah, a MSW student has been selected through Campus Placement for the position of Trainee Area Manager in GNRC Hospital, Guwahati.



Archita Boruah, a MSW student has been selected through Campus Placement for the position of Trainee Area Manager in GNRC Hospital, Guwahati.



Hiyana Das, a MSW student has been selected through Campus Placement for the position of Trainee Area Manager in GNRC Hospital, Guwahati.

Section VII
Photo Gallery

TRA 400

27A

27

TRA 400

27A →

MINOLTA

27

PHOTO GALLERY







































MSW 1st Semester Batch 2023-2025



MSW 3rd Semester Batch 2022-2024



BSW 1st Semester Batch 2023-2027



BSW 3rd Semester Batch 2022-2025



BSW 5th Semester Batch 2021-2024



THANK YOU

